



# 5680/5700 Telemetry Kit



This kit contains the parts needed to install telemetry on 5680 / 5700 machines. Carefully follow the installation instructions as described. This kit is intended for models manufactured after July 2002.

## INSTALLATION INSTRUCTIONS:

**Installation Time:** 2 Hours

**Special Tools Required:** None

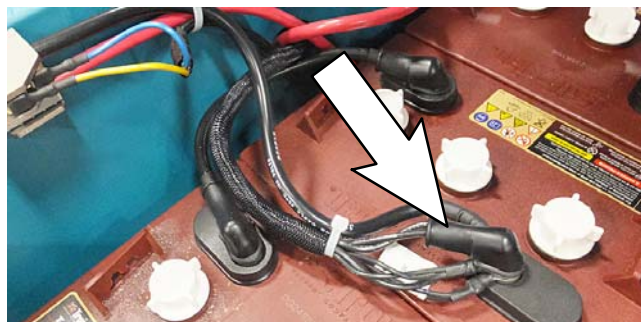
The IRIS (telemetry module) must be activated to complete this installation. The module will not function until it is activated. Call for assistance (North America - Technical Support / Australia - CCC) activating the module after all telemetry components have been installed. Have machine serial number and IRIS module SIM number (located on back of IRIS control box assembly) ready when calling for activation.

*NOTE: Numbers in parenthesis ( ) are reference numbers for parts listed on page 9.*

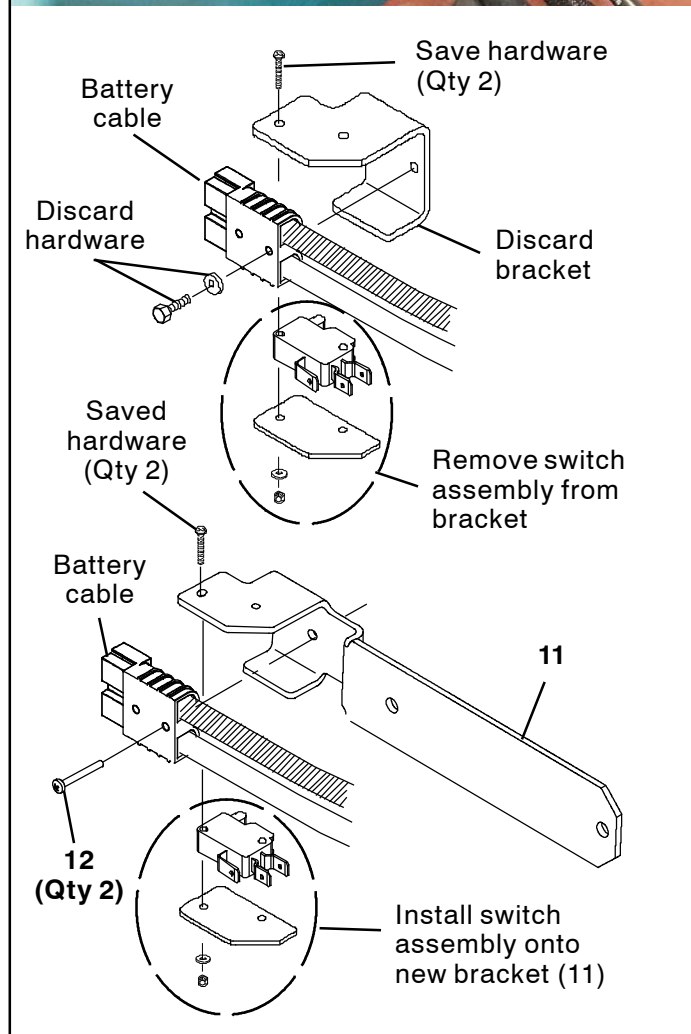
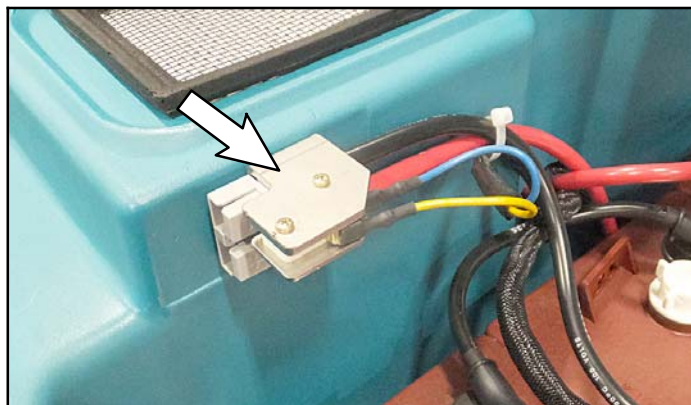
- Machines equipped with ec- H2O only:**  
Confirm the ec- H2O system is fully functional. The ec- H2O must be fully functional before the IRIS system can be installed.
- Confirm the hour meter is properly wired and functional. The hour meter must be fully functional and wired properly before the IRIS system can be installed.
- Park machine on level surface, turn off machine, remove key, and set parking brake if equipped.

**FOR SAFETY: Before installing kit, stop on level surface, turn off machine, remove key, and set parking brake if equipped.**

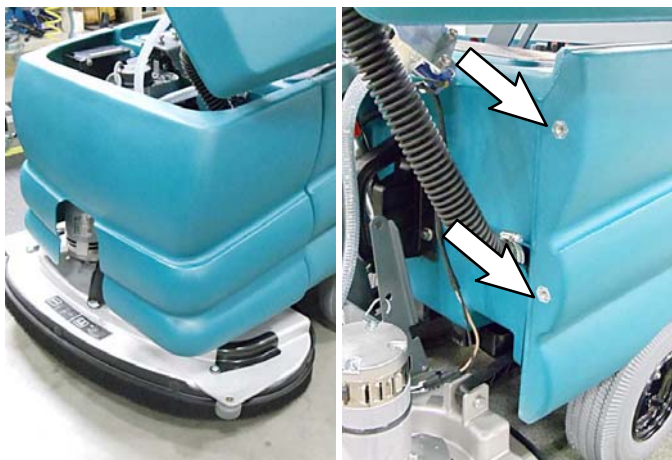
- Evaluate the condition of batteries, cables, and terminal connections. Batteries / cables / terminal connections must all be in safe working condition.
- Disconnect all black battery cables from negative battery terminal as shown before installing kit.



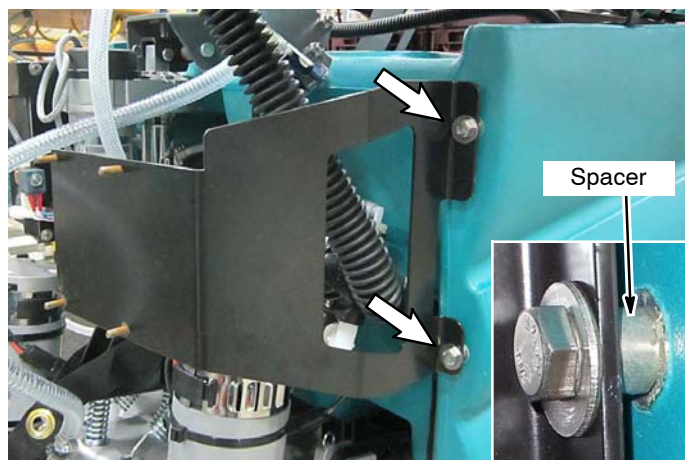
- Replace the charger connector bracket with new connector bracket (11). Discard the removed connector bracket.



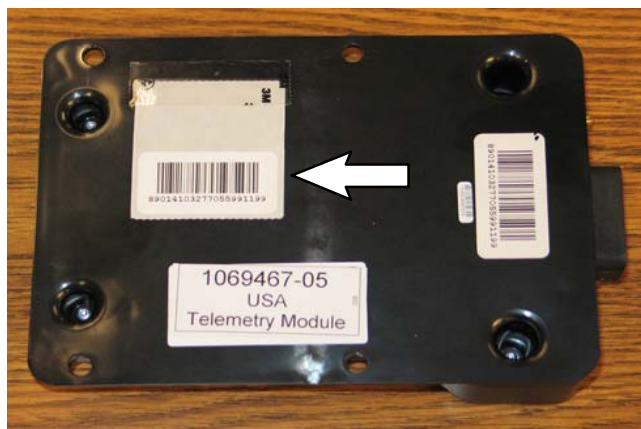
7. Remove the front cover from machine to access area where the telemetry module will be installed. Remove the mounting hardware from left side of machine as shown.



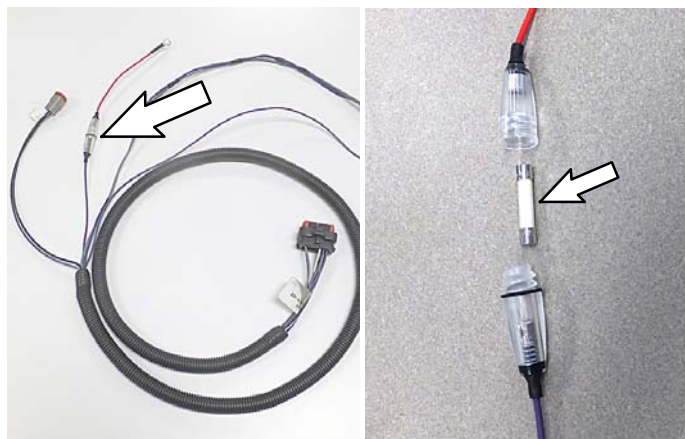
8. Install the module bracket (4) onto the machine. Use new hex screw (3) and washer (2) with existing spacer.



9. Remove the additional SIM label from the back of the control box (1) and set label aside in a safe place. The number on the SIM label will be needed for activating the machine.



10. **IMPORTANT:** To prevent possible damage to telemetry system during install, remove the in-line fuse from the telemetry harness (22). Do not misplace fuse.

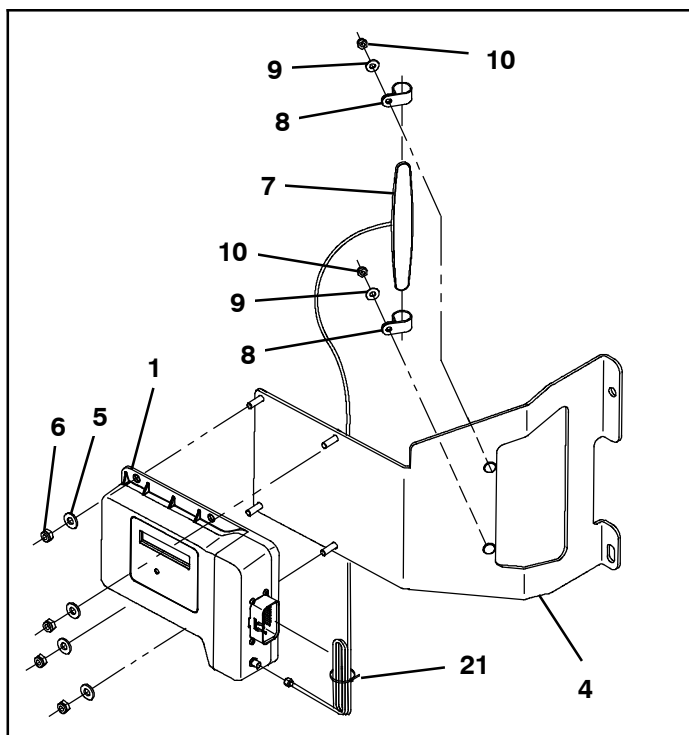


11. Mount the telemetry module (1) to module bracket (4) using hardware (5, 6) as shown.

12. Attach antenna (7) to module bracket using two cable clamps (8) and hardware (9, 10) as shown.

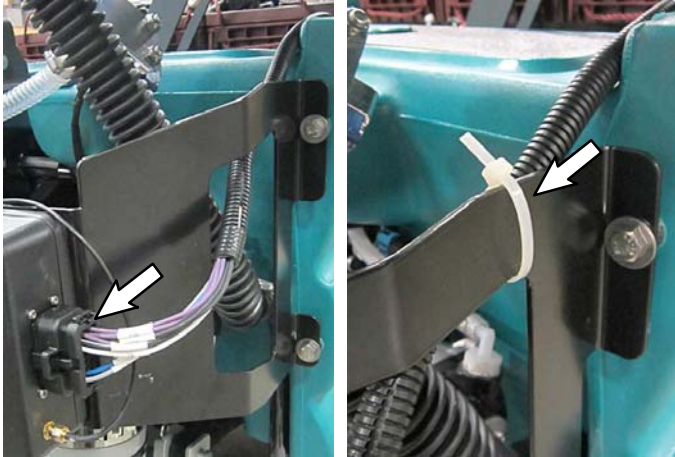
Connect the antenna cable to module and secure the antenna cable with cable-tie (21) as shown.

*NOTE: Numbers in parenthesis ( ) are reference numbers for parts listed on page 9.*



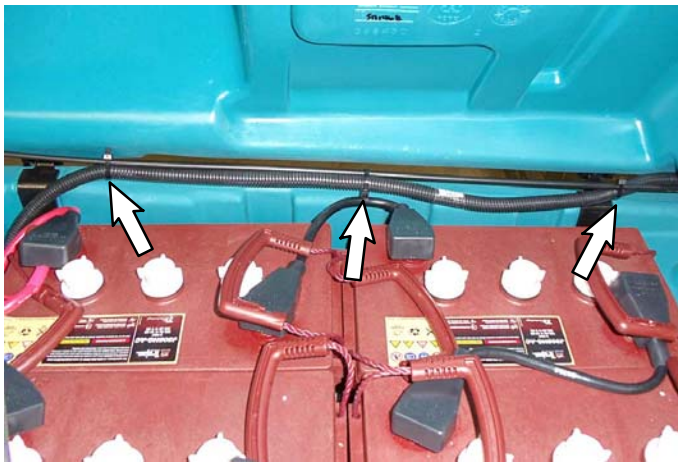


13. Connect the telemetry harness (22) to telemetry module (1) and route harness as shown. Secure harness to bracket with cable tie (21).



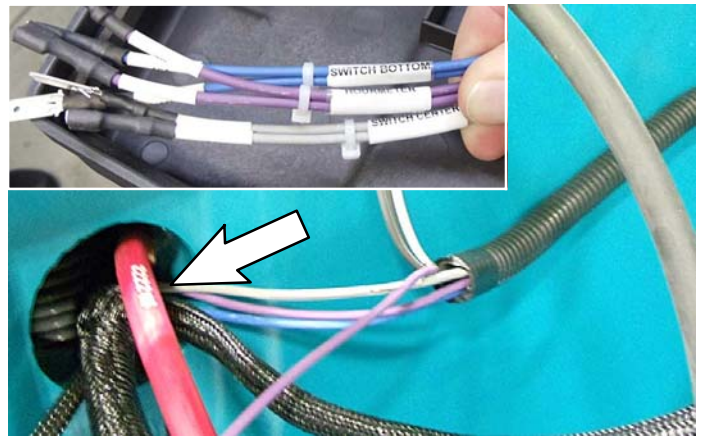
14. Reinstall the front cover onto the machine.

15. Route the telemetry harness along the solution control valve cable and secure with three cable ties (21).



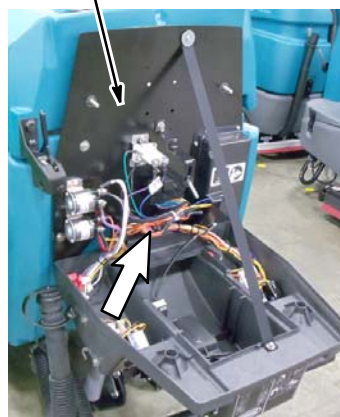
16. Route the blue (SWITCH BOTTOM), gray (SWITCH CENTER), and purple (HOURMETER) telemetry harness (22) wires through hole and into the control console area.

**NOTE:** Battery removal may be necessary to access hole.

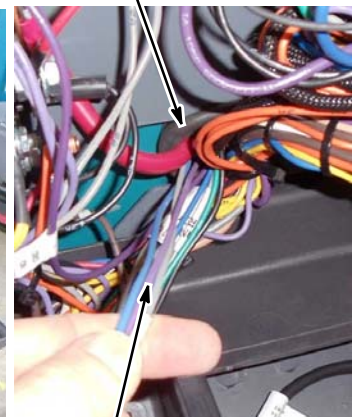


17. Lower the control console and locate the routed wires behind the metal component panel. Feed wires through the rubber grommet as shown.

Metal component panel

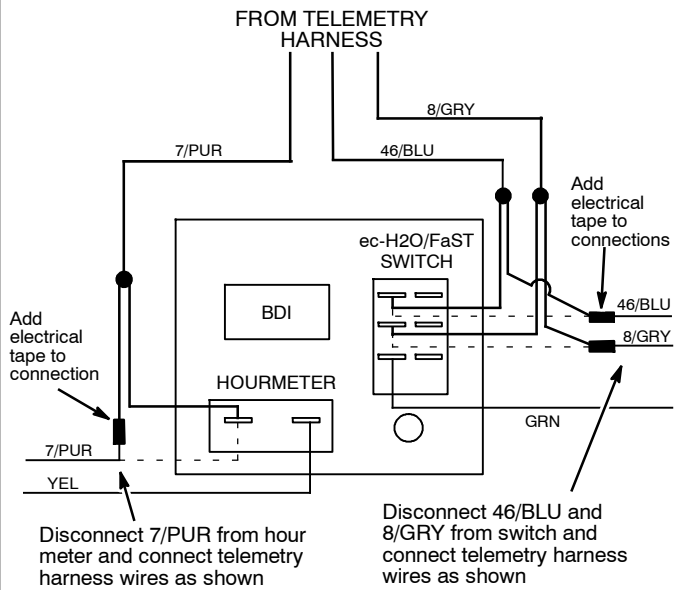
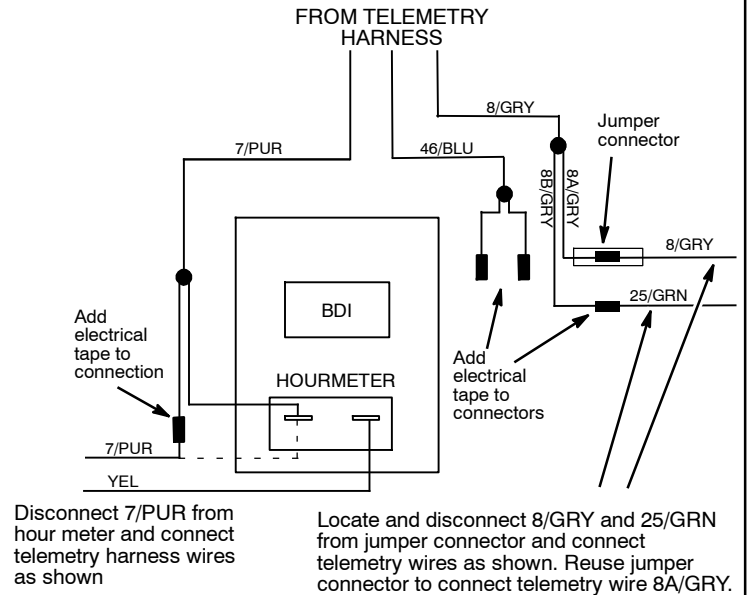
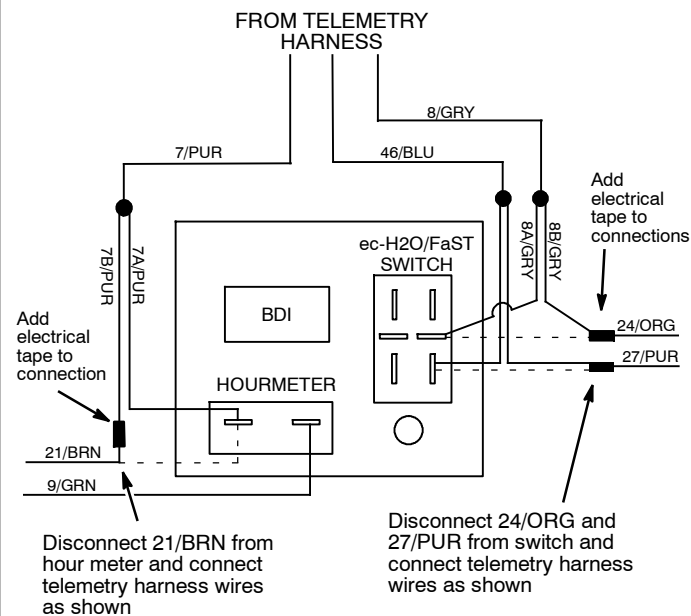
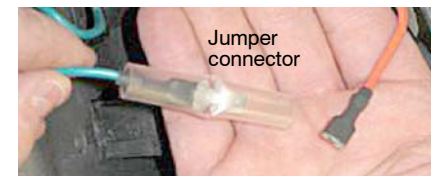
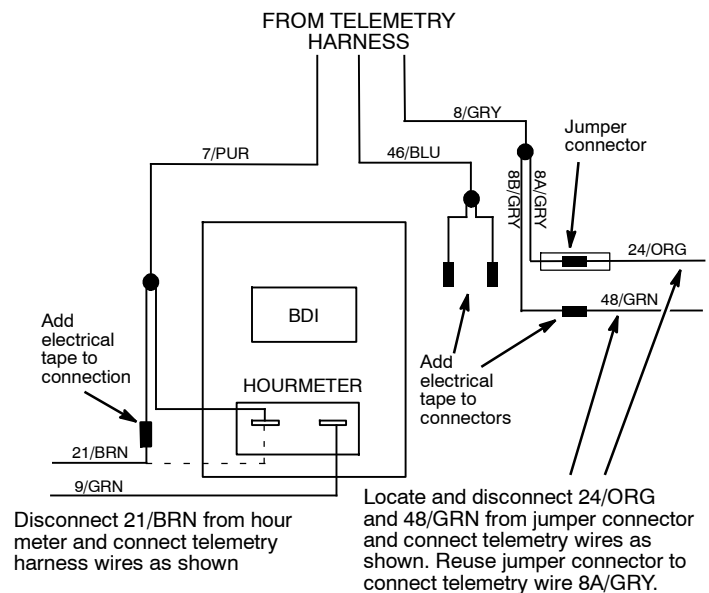


Rubber grommet



Telemetry wires

18. Connect the routed telemetry wires as shown.  
Secure wires with wire-ties. Close control console after connecting wires.

**5680 Model with ec-H2O/FaST****5680 Model without ec-H2O/FaST****5700 Model with ec-H2O/FaST****5700 Model without ec-H2O/FaST**

Machine battery cable

13/BLK  
13/BLK- WHT

79/WHT

RED

BLACK

Main wire harness connectors previously connected to battery negative (-) terminal

If machine is equipped with on-board charger, connect negative cable from charger to shunt.

Position wire connections as shown and tighten screws.

Shunt High Shunt Low

Shunt

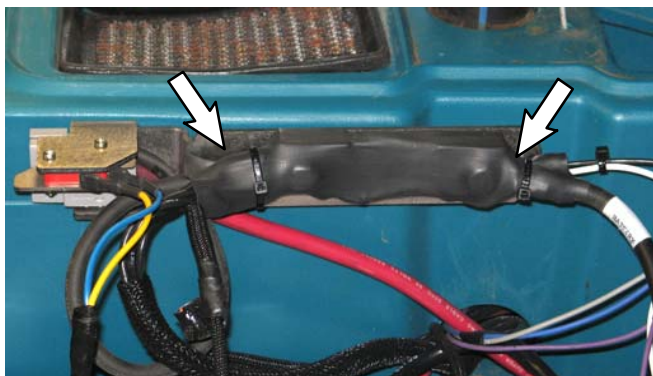
To Battery (battery cable 23)

Machine's main wire harness, battery cable, and on-board charger cable(-) if equipped.

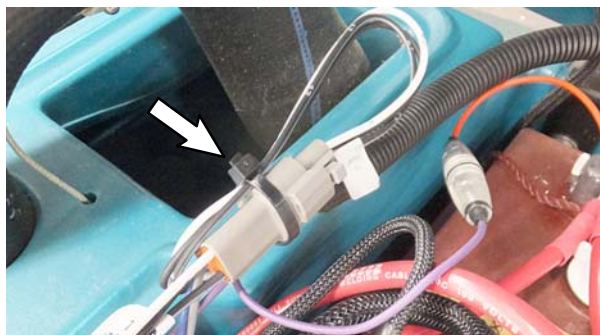
79/WHT 13/BLK, 13/BLK-WHT



22. Attach the shunt assembly to shunt bracket with cable-ties.



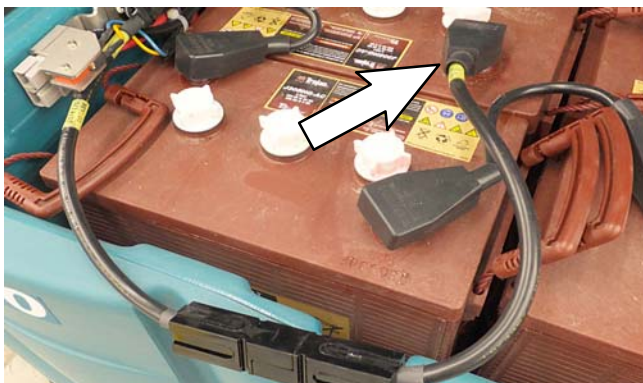
23. Connect the telemetry harness connector to the shunt harness connector. Secure with cable-tie.



24. Connect the red fuse wire from telemetry harness to the positive battery terminal. Position the ring terminal on top of battery cable.



25. Connect the black battery cable from shunt to battery pack.



26. Reinstall fuse into telemetry harness.



27. Apply the FCC label (26) onto the control console as shown.



28. Start and test the machine.

29. **North America Customer Locations:** Activate the IRIS (telemetry module): Call Technical Support (between hours of 7:00 am and 5:00 pm CST) for assistance to activate the module. The IRIS telemetry system must be activated to complete this install. Be sure to have machine serial number and IRIS module SIM number ready when calling for activation.

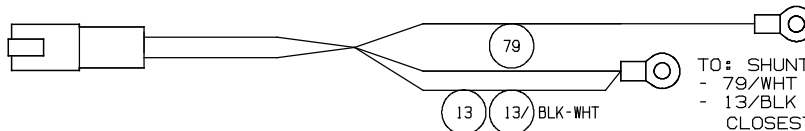
**Australia Customer Locations:** Activate the IRIS (telemetry module): Call CCC (between hours of 8:00 am and 5:00 pm AEST) and ask to be routed to the IRIS expert for assistance to activate the module. The IRIS telemetry system must be activated to complete this install. Be sure to have machine serial number and IRIS module SIM number ready when calling for activation.

**NOTE:** The IRIS (telemetry module) must be activated to complete this installation. The module will not function until it is activated. Call for assistance activating the module after all telemetry components have been installed.

## Telemetry Electrical Harness

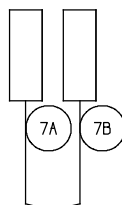
TO: TELEM HARNESS  
NO LABEL

WIRE NO.	POS.
79/WHT	1
13/BLK - WHT	2
13/BLK	3



TO: SHUNT  
- 79/WHT = HIGH SIDE.  
- 13/BLK & 13/BLK-WHT =  
CLOSEST TO BATTERY  
NEGATIVE POST.)  
(NO LABEL)

TO: HOURMETER NEGATIVE.  
LABEL (1): "HOURMETER - "

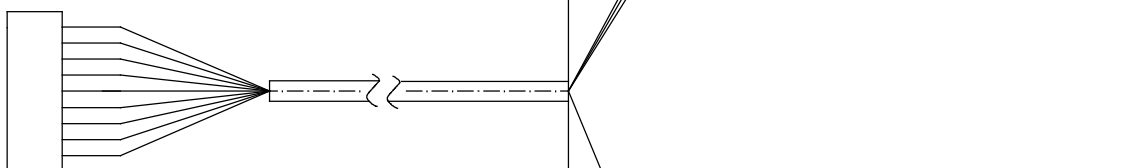


TELEMETRY  
MODULE  
(23 PIN CONN.)

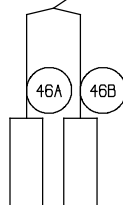
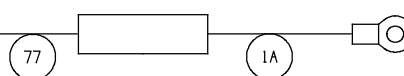
TO TELEMETRY	
WIRE NO.	POS.
8/GRY	1
79/WHT	6
13/BLK - WHT	7
7/PUR	8
46/BLU	9
13/BLK	21
77B/PUR	22
77A/PUR	23

SHUNT CONNECTION  
LABEL: TO SHUNT

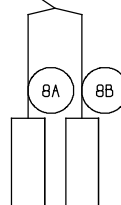
WIRE NO.	POSITION
79/WHT	1
13/BLK - WHT	2
13/BLK	3



TO: +36VDC @ BATTERY

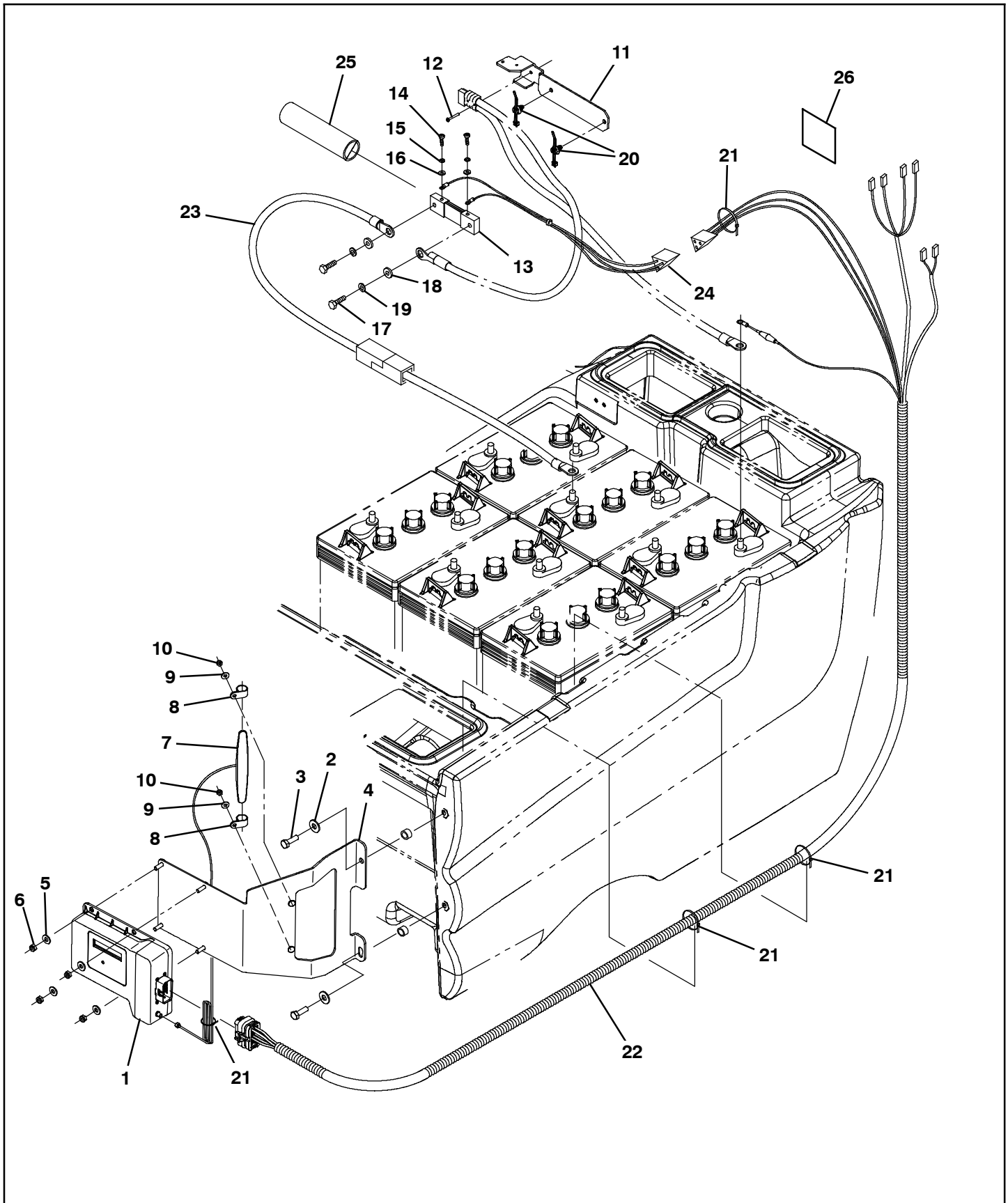


TO: EC-H2O OR FAST SWITCH  
LABEL (1): "SWITCH BOTTOM"



TO: EC-H2O OR FAST SWITCH  
LABEL (1): "SWITCH CENTER"

**Bill Of Materials For Telemetry Kit, CI [5680/5700, USA] - 9013940 /  
Telemetry Kit, CI [5680/5700, Intl] - 9013992**





**Bill Of Materials For Telemetry Kit, CI [5680/5700, USA] - 9013940 /  
Telemetry Kit, CI [5680/5700, Intl] - 9013992**

	Ref.	Tennant Part No.	Description	Qty.
	1	1070541	Control Box Assy, Telem [3G, Intl.]	1
	1	1069467	Control Box Assy, Telem [USA, 3G]	1
	2	01685	Washer, Flat, 0.38B 0.88D .08, SS	2
	3	12333	Screw, Hex, M8 X 1.25 X 25, SS, NL	2
	4	1216199	Bracket, Mtg, Module	1
	5	32483	Washer, Flat, 0.25, SAE	4
	6	08708	Nut, Hex, Lock, M6 X 1.00, NL	4
	7	315724	CS, Antenna, Telem, 18.0 IN [GPRS]	1
	8	140916	Clamp, Cable, Nyl, 0.62D, Nat	2
	9	01683	Washer, Flat, 10, SS	2
	10	06549	Nut, Hex, Lock, M5 X 0.80, NL	2
	11	1216530	Bracket, Connector [5680]	1
	12	06923	Screw, Pan, Phl, M3 X 0.50 X 25, 4.8	2
	13	1217304	Shunt [EMPRO, 250AMP/50MV, Metric]	1
	14	391403	Screw, Pan, Phl, M4 X 0.70 X 8, SS	2
	15	02938	Washer, Lock, Int, 08, SS	2
	16	41578	Washer, Flat, 06, SS	2
	17	15675	Screw, Hex, M8 X 1.25 X 16, SS	2
	18	01685	Washer, Flat, 0.38B 0.88D .08, SS	2
	19	43952	Washer, Lock, Int, 0.31, SS	2
	20	1210807	Wire, Tie [W/.25" Fir Tree Clip]	2
	21	130773	Tie, Cable, Nyl, 11.0L, .14W, 3.0 Max. D	13
▽	22	1074420	Harness, Ele, [Telem, 5680/5700]	1
▲		9009990	Fuse, 002A. 250vdc, Cartridge	1
	23	1074487	Cable, 04GA 28.2L Blk .31Ring /.31Ring	1
	24	1074595	Harness, Ele [Telem, Shunt]	1
	25	1217818	Sleeve, Heat Shrink, 1.50ID, 07.0L	1
	26	1069580	Label, Mach, Telem [FCC, USA, 2G/3G]	1

TENNANT COMPANY  
P. O. Box 1452  
Minneapolis, MN 55440-1452